



# HEATEM

## ENGINEERING CO.

HOUSE OF INDUSTRIAL HEATERS



Screw-Type-Mica  
Strip-Heater



Strip



Ceramic-Band  
Heater



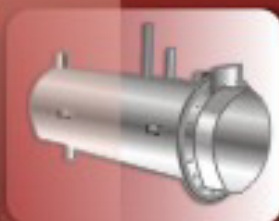
Band Heater



Cab Heater



Control-Panel



Oil Line  
Heater



Small Type  
Baking Oven



Flux Drying Oven



Trolley-Conveyor

WE SERVE INDUSTRIES LIKE

Auto-mobile Industry  
Plastic Industry  
Textile Industry  
Food Processing Industry  
Leather Industry  
Steel Industry  
Railway Industry  
Rubber Industry

Office :

P 30 A, C. I. T. Road, Scheme 52, Kolkata - 700 014,  
Phone No. 033-2227 6384 / 2265 0478 / 2249 8588,  
Fax No. 033-22650478,  
E-mail : [heatemengineeringco@gmail.com](mailto:heatemengineeringco@gmail.com)  
: [heatemenggco@rediffmail.com](mailto:heatemenggco@rediffmail.com)  
website : [www.heatemengineeringco.com](http://www.heatemengineeringco.com)

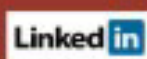
Follow us on Facebook



Twitter



&





## - CERAMIC-BAND HEATER

### Features :

Thermal Insulation, S. S. Housing, Nickel-Chrome Wire, Conserves energy, Minimum heat loss, Flexible for easy installation, Longer Heater life & Designed to your specifications.



## - BOX TYPE STRIP HEATERS

### Features :

Reactory Insulation; Nichrome Wire & S. S. Sheet.



## - TUBULAR MINERAL FILLED FINNED HEATERS

### Features :

S. S. / Incoloy Tube ; Superior Quality Fused MgO Powder for insulation purpose; Resistance Wire-Ferrous based Kanthal or Nickel – Chromium; Maximum Operating temperature upto 250°C; Designed to your specifications.



## - SILICA CASED IMMERSION HEATERS

### Features :

'HEATEM' Silica cased immersion Heaters are encased in fused silica tube or lead cover mostly used in acidic solution. These heaters for are suitable horizontal operation only.



## - ALKALINE IMMERSION HEATER

### Features :

'HEATEM' Alkaline immersion heaters are made from AISI 316 grade S. S. Tube suitable for horizontal or vertical operation. The end of the heater is flanged or screw type with BSP connection on to be used in alkaline.



## - WAX MELTING POT HEATERS

### Features :

'HEATEM' Wax Melting Pot Heaters are made for C.I. casting pot embedded with Mica Type Band Heater.

**Application:** Used for melting of wax





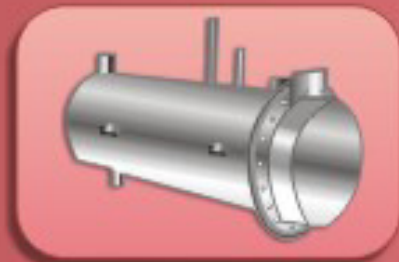


## - ELECTRIC BRANCH LINE OIL HEATERS

Electric oil pre heater for light & heavy fuel oils

### Features :

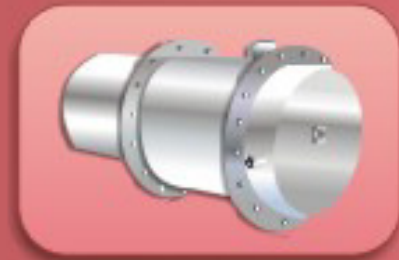
Steel welded construction tank with thermal lagging to prevent heat loss to minimum. Heater elements are replaceable type and surface loading is 10 watts per sq.inch and specially designed for light and heavy fuel oil. This unit will have built-in-thermostat for temperature control.



## - OIL HEATERS / FLOW TYPE OIL HEATERS

### Features :

All steel construction body with replaceable type heaters in a steel tank with central or end flange for fitting to the storage tank. Thermostatic control will be provided with this heater from 1 kw to 270 kw.



## - FINNED TUBULAR DUCT HEATERS

### Features :

'HEATEM' Finned Tubular Duct Heaters are specially designed for comfort heating or process air heating in installations involving forced passage of air through ducts. These heaters with-brazed edge wound fin & high temperature aluminium coating permits sheath temperature of high range. These heaters are built with heavy - gauge steel with integral corrosion resistant coating. Terminal box is provided where heaters are pre-wired for a given number of heating stages. Adjacent junction box houses leads for field connection to a fused powder source.



## - LEAD MELTING POT HEAT

### Features :

WATTS	: 2500	3000
VOLTAGE	: 230	230



## - LOW DENSITY PENCIL HEATER

### Features :

'HEATEM' Low density cartridge & pencil heaters are being developed for heating application not requiring high watt density. The element assembly is placed within a sheathing made out of Stainless Steel or Brass.







## - CAB HEATER

### Features :

'HEATEM' Cab Heaters are used in railway locomotives as it's original equipment. This is one of our main products.



## - MICA BAND HEATER

### Features :

Rust resistant sheath; Superior quality Nickel - Chrome Ribbon & superior grade of Mica.



## - MICA TYPE STRIP HEATERS

### Features :

Superior grade of Mica, Nichrome Wire, S. S. or Brass Sheet, Tanks & Hoppers.



## - RECTANGULAR TYPE FINNED STRIP HEATER

### Features :

Sheathing material: S. S. 304/ Galvanised Sheet / M. S. Sheet ; High Quality Ceramic Insulator ;

### Resistance Wire :

Ferrous based Kanthal or Nickel-Chromium ; Maximum Operating temperature up to 250°C. Designed to your specifications ;



## - TUBULAR MINERAL FILLED IMMERSION HEATERS FOR WATER & OIL

### Features :

'HEATEM' Tubular mineral filled immersion Heater provide the most efficient method of heating. All of the heat generated is absorbed by the surrounding material providing the highest heating efficiency possible. These heaters are designed to produce various heat intensities. It's basic design consists of tubular heating elements and terminals situated at each end of the tube. The element is centrally located along the axis of copper or mild steel or S. S. tube and brazed or welded to pipe plugs, steel fanges, or steel plates embedded in a fused MgO powder having a high specific resistivity and good heat conduction. All single or double tube elements are working at 230V; the three tube elements are either 230V or 400V or any other voltage as desired by customers. 3 phase A. C. 4 Wire.



## - GIANT CARTRIDGE IMMERSION HEATERS

'HEATEM' Giant Cartridge immersion Heaters are made from copper, brass, M.S S.S. Sheathing or Incoloy sheathing suitable for water, oil, alkaline solutions & acidic solutions.

Available in 10" to 96" long and 1.5" to 2" dia pipe with suitable screw plug or flange. Watt loading from 1000 to 6500 at 230 / 250V. 3 phase. 400V and 4 wire can also be supplied.





## - SPACE HEATERS

### Features :

'HEATEM' Space heaters suitable for Heating Control Panel, Motor or any other places where moisture can damage the electrical conductor.



## - QUARTZ HEATER

### Features :

'HEATEM' Radiant Quartz Heater are specially designed for applications that require infrared radiant heating. The basic design consists of helically wound resistance coil housed by a pure vitreous silica fused quartz tube. The heating coil is specially designed to provide long life at rated voltage. The quartz tubing is terminated with specially designed ceramic insulated caps. The ceramic caps are securely fastened to the quartz tube with high temperature cement, providing excellent support to the power connecting termination.



## - TUBULAR MINERAL FILLED AIR HEATERS

### Features :

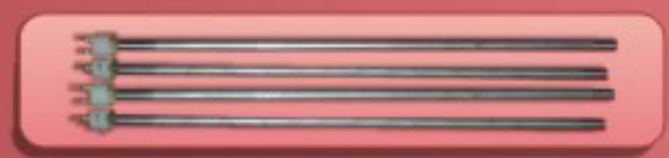
'HEATEM' Tubular mineral filled Air Heaters are designed with tubes of copper, brass, mild steel or stainless steel, loaded with element and terminals situated at each end of the tube. The element is centrally located along the axis of the tube and embedded in a fused MgO powder having a high specific resistivity and good heat conduction. The terminals are either of screw or binding post type and are sealed against ingress of moisture. The elements are all 23/250 V working and in case of 3 phase, three heaters are to be connected in star. These heaters are mostly used for space heating, and air draught operation.



## - LOW DENSITY CARTRIDGE HEATER

### Features :

'HEATEM' Low Density cartridge & pencil heaters are being developed for heating application not requiring high watt density. The element assembly is placed within a sheathing made out of Stainless Steel or Brass.







## - RADIANT TUBE HEATERS

### Features :

'HEATEM' Electrical elements when used in radiant tubes have been designed to give a long life whilst operating at maximum power. This has been made possible due to the application of Nichrothal 80 wire in Incoloy / Inconel 600 sheathing in combination with an improved element design, with a power rating up to 45kw per meter (9.1 kw per ft.) length. Furthermore the element assembly is low weight, which means that long elements and tubes can easily be mounted horizontally.



## - TAPE HEATERS

### Features :

'HEATEM' Tape Heater also called Surface Heater are made from high - temperature Fibre Glass, having low watt density and used for heating pipe line.



## - HEAT TRACER :

### Features :

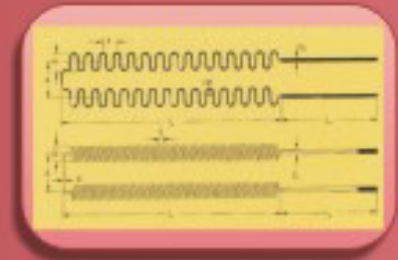
The application of Heat Tracer may be found in the oil and gas production and storage facilities, petrochemical plants, refineries, pharmaceutical production, power generation, water and waste treatment plants, food processing, plus many others. Solutions can be provided for freeze protection, or for temperature maintenance duties.



## - HEATING COIL FOR FURNACE

### Features :

'HEATEM' Heating Coil for Furnace are made from 80/20 Nichrome Wire or Kanthal A1 or Strip as per customers Specification.



## - MULTIPLE TUBE OIL IMMERSION HEATERS

For installation on oil storage tanks where higher loadings are required to be concentrated.

### Features:

All steel construction, with multiple tube heating elements of the re-chargeable pattern. This unit has a built-in thermostat Master thermostats are provided on all units of 6 K. W. upwards.

### Applications:

Used in oil fired furnace as it's essential part. For installation on oil storage tank directly and supply of oil being taken from heaters tank.



# THERMOCOUPLES



## - THERMOCOUPLES

### Features :

The principle on which the modern thermocouple operates is derived from Seebeck's discovery that if a circuit is formed using two dissimilar metal conductors with one junction at a higher temperature than the other, then a current will flow in the circuit. The resultant emf is proportional to the temperature difference between the junctions.

For many industrial heating processes, particularly those carried out at high temperatures, a thermocouple is the most accurate, convenient and simple method of temperature measurement. In some instance, it is in fact the only feasible method.



- J-TYPE THERMOCOUPLE (IRON / CONSTANTAN)
- K- TYPE THERMOCOUPLE (CHROMEL / ALUMEL)
- R-TYPE THERMOCOUPLE (PT/ RH/ PLATINUM)
- PIN TYPE STRAIGHT THERMOCOUPLE
- BAYONET TYPE STRAIGHT THERMOCOUPLE
- FURNACE TYPE THERMOCOUPLE IN M.S./S.S. HOUSING
- BAYONET TYPE 'L' SHAPE THERMOCOUPLE
- PT 100 SENSOR

# BAKING OVEN



## - SMALL TYPE BAKING OVEN

### Features :

'HEATEM' Small Type Baking Ovens are used for drying & dehydrating in the Pharmaceuticals, Electrical, Plastics, Automobiles and host of other industries. Ovens are usually made as per customer's specifications and requirements. Standard ovens are available with tray in four different sizes, i.e.- 12 trays, 24 trays, 48 trays and 96 trays.



## - ROTARY GELATION BAKING OVENS

### Features :

'HEATEM' Rotary Gelation baking ovens are used for baking of traction motors, big armature required for railway locomotives or any other motor manufacturer. In this oven the armature rotates on rotating jig inside the oven uniformly for faultless baking.



## - LARGE TYPE BAKING OVENS

### Features :

'HEATEM' Large Type Baking Ovens are used for baking of Armature Coils, Traction Motor, Transformer Coil. as per customer's specifications. A trolley to carry upto 5 tonnes load will be provided. Digital temperature Controller along with Temperature Recorder for perfect working of the oven will be provided with all precautionary measures for faultless running.



## - FLUX DRYING OVEN





- Flux Drying Oven -



- Annealing Furnace -



- Pit Type Furnace -

'HEATEM' Annealing Furnace is used for annealing of metals.



- Boggle Hearth Furnace -



- Trolley Conveyors -



- Slat Conveyors -



- Control-panel -